



## **Dissociative Identity Disorder (DID) in *Split*'s Film by Night Shyamalan**

**Arif Hidayat  
Diana Rozelin**

Fakultas Adab dan Humaniora UIN Sulthan Thaha Saifuddin Jambi  
Arifhidayat00015@gmail.com

### **Abstract**

This thesis analyzes Kevin's Dissociative Identity Disorder (DID) as seen in Night Shyamalan's *Split* film. The writer is interested in analyzing this film because the nature and character of Kevin as the main role is always changing, ranging from little children, adult men and women. This research was designed to determine the forms of Dissociative Identity Disorder (DID) and causes of Dissociative Identity Disorder (DID) and the solve Dissociative Identity Disorder (DID) by Kevin in the *Split* film by Night Shyamalan. The writer uses Dissociative Identity Disorder (DID) Theory by Nevid to support the writing of this thesis. This study uses qualitative research and descriptive method, analyzed and described in the form of words rather than numerical scores or statistics. The data of the research are the pictures and dialogue, which contains body language expressed by the main character. The research result shows that *first*, there are 4 forms of Dissociative Identity Disorder (DID) Kevin experienced were the main personality, where Kevin was the main personality, the dominant personality, the dominant personality in Kevin was personality became Dennis, dissociative identity disorder was not aware of each other, where Hedwig's personality was confused about what Dennis had done as an evil personality figure in Kevin, dissociative identity disorder competed to gain self-control of the perpetrators, often Dennis and Patricia took over Kevin. *Second*, there are 2 causes of Dissociative Identity Disorder (DID) that occur to Kevin, namely, experiencing severe childhood pain such as physical torture and sexual abuse, where Kevin always gets beaten from his own mother and sexual abuse from his uncle, encouraging himself to stand wild, Kevin who gets treatment is not good at trying to fight and not be yourself. *Third*, there are two ways when Kevin wants to solve Dissociative Identity Disorder (DID) in Night Shyamalan's *Split* Film, they get speech and Psychotherapy, where he meets a doctor if he always feels his past and the doctor asks him to forget his past and get a lot of talk, where he tries tell his thoughts.

**Keywords:** Film, DID (Dissociative Identity Disorder), Id.

### **I. Background of the Problem**

Mental disorders without us knowing it slowly can happen to anyone around us. The stressful demands of life that are not matched by one's mental resilience can create stress in ones that trigger severe stress. This condition becomes very common as a cause of mental disorders. The condition of this mental disorder will worsen if it is not immediately addressed. Disorders that occur can come from yourself and the environment. Mental disorders also show signs that are seen verbally and behavior. People with mental disorders have feelings that are unstable and changeable, behavior becomes strange or abnormal. There are kinds of soul disorders: Schizophrenia, Dissociative Identity Disorder, Excessive Anxiety Disorders, Obsessive Compulsive Disorders, Somatoform Disorders, Psychopath.<sup>1</sup>

Dissociative Identity Disorder (DID) is a disorder in which a person exhibits two or more distinct and alternating personalities, formerly called multiple personality disorder.<sup>2</sup>

<sup>1</sup> Hindra, "Macam-macam gangguan jiwa, <https://dosenpsikologi.com/macam-macam-gangguan-jiwa>, accessed on March 23 2019

<sup>2</sup> Hellen M.Farrel, "Dissociative Identity Disorder", Journal of the America Academy of Psychiatry and the Law, 2011, vol 39, p. 402



Dissociative Identity Disorder involve a sudden and temporary alteration in consciousness, identity, or behavior. Symptoms rather than signs, are predominant features of DID. They include headaches, auditory hallucinations and intrusive memories which may have not clear behavioral manifestations and thus are difficult to measure empirically. There are who believe that disorder, like the child abuse that preceded it, can no longer be denied and there are already too many people suffering because of a refusal to believe.<sup>3</sup>

Sometimes, some people cannot accept their failure in life and try to escape from the reality, then they create another personality of him or herself for their own sake who demands perfect life. Life does not go on based on our own sake. The disaster can come to our life anytime. Not all of people good or bad. Sometimes, we met good people or bad people. Every meeting with the other people will give impact to us as human.<sup>4</sup> It can be happiness, hatred, sadness, traumatic, etc. When someone feel traumatic. He or she does not want to remember that memories and try to deny that moments never happen in his or life. That condition can have triggered and make this disorder. There are other mental health professionals who suspect that symptoms of DID may be invented by overzealous therapist. The idea that repressed memories can be elicited, remembered and disclosed within therapy is viewed by some with uncertainty, indeed cynicism.

In this thesis the writer is interested in analyzing film where there many aspects in film such as economy, social, ideology, culture, and psychology. Film also called communicates information and ideas, and they show us place and ways of life we might not otherwise know. Amy Villarejo stated that film is structured like a language and it is telling stories.<sup>5</sup> It means that film offer us of seeing and feeling that we find and Anna Powell said film is inspired product of creative team and might well stimulate person fantasies.<sup>6</sup> It means that film is working togetherness and series of live picture in a frame where a frame is projected by projector lens in mechanic so that the live picture will be seen as if it is alive.

The writer interested in choosing this film because three girls are kidnapped by a man with a diagnosed 5 distinct personalities. They must try to escape before the apparent emergence of a frightful new 24th. Though Kevin has evidenced 5 personalities to his trusted psychiatrist, Dr. Fletcher there remains one still submerged who is set to materialize and dominate all of the others. Compelled to abduct three teenage girls led by the willful, observant Casey, Kevin reaches a war for survival among all of those contained within him as well as everyone around him as the walls between his compartments shatter.

There are some problems that occasionally happen related to dissociative identity disorder (DID) experienced are by Kevin in *Split's* Film by Night shyamalan, where Casey is a withdrawn teenager, having been molested as a child by her uncle John, her legal guardian. While hanging out with her classmates, Claire and Marcia, the three are kidnapped by Kevin Wendell Crumb, a man suffering from dissociative identity disorder (DID). Kevin is in therapy with Dr. Karen Fletcher, who has identified 23 distinct personalities within Kevin; in his mind, these personalities sit in chairs in a room, waiting for Barry, the dominant personality, to grant them their turn in the light (in control). She has also found that Kevin's physiology changes with each personality.

## II. Method of Research

<sup>3</sup> Mukminah, "Psycholinguistic Analysis in Speech Disorder of a Cerebral Palsy in Door to Door Movie", Skripsi: Universitas Sanata Dharma, 2007, p. 4

<sup>4</sup> Lie Sun "Language Disorder Are Learning Disabilities Challenges on the Divergent and Diverse Paths to Language Disability". Journal Topics in Language Disorder/January-March 2014, p.6

<sup>5</sup> Amy Villarejo, *Film Studies the Basic*, (New York: Library of Congres, 2007), Third Edition, p. 12.

<sup>6</sup> Anna Powell, *Deleuze, Altered States and Film*, (Edinburgh University Press Ltd, 2007), p. 3.



### Design of Research

In writing this thesis, the writer uses qualitative research and descriptive method that is suitable with the aim of this research. Qualitative research may be in descriptive form. The data are collected in the form of words as a descriptive explanation than a number. The result of the research contained quotation from the data to illustrate and substantiate the presentation. Descriptive research is a research which aims to describe a phenomenon accurately based on the characteristic of research.<sup>7</sup> In this thesis, the writer uses qualitative research, where the data are analyzed through interpreting, not statistic analysis.

### Source of the Data

The main data directly related to the discussion of the thesis. In this research the writer takes the data from *Split's Film* by Night Shyamalan, a film which was directed by Night Shyamalan in 2007, with the duration 115.22 minutes. The writer used the script, dialogues and picture on screen. The writer used as resources in support or data indirectly but closely related to the discussion of the thesis, the data which support this research such as some internet and cyber data, books, dictionaries, new papers, and the other source that have correlation with the research.<sup>8</sup>

### Technique of Data Collection

In an effort to get the data and fact, in this research the writer uses documentation and Sugiyono stated that "*Dokumen merupakan catatan peristiwa yang sudah berlalu dan dokumen ialah setiap bahan tertulis, film ataupun dari record yang dipersiapkan karena adanya permintaan seorang penyidik*".<sup>9</sup> It means that in qualitative research, the writer used some documents that have correlation or support the problem of the research, because this research is descriptive that is why the writer described and analyzed the data that has been found in *Split's Film* by Night Shyamalan to answer of the problems that has been formulated in the formulation of the problem.

### Technique of Data Analysis

In this research, the writer used content analysis because this research a lot of explanation are described event, behavior, and object. It was way the writer described, analyzed the data that has been found in the script *Split's Film* by Night Shyamalan to find the answer the formulation of the problems that have been formulated.

## III. Analysis

### The Kinds of DID Portrayed by Kevin in *Split's Film* by Night Shyamalan

The writer found that there are four kinds of DID Portrayed by Kevin in *Split's Film* by Night Shyamalan. It can be seen below:

#### The Main Personality

The main personality is not aware of the presence of a substitute personality, the personality that is present after the personality inherent in the actor. The writer found that the

<sup>7</sup> John W. Creswell, *Qualitative Inquiry and Research Design*, (United States of America: California 1997), p. 15.

<sup>8</sup> Tim Penyusun, *Pedoman Penulisan Skripsi*, (Jambi: Fakultas Adab-Sastra da Kebudayaan Islam, 2011), p. 14.

<sup>9</sup> Sugiyono, *Metode Penelitian Kuantitatif Kualitatif dan R & D*, p. 9.



main personality in this research is Kevin, where he was mysteries but he was good. He just hoped that he can get what he wanted in his life and in this film the appearance of Kevin is only at the beginning and the end of the scene. It can be seen in the example below:



Picture 5 <sup>10</sup>

**Kevin** : Who are you ?<sup>11</sup>

From the quotation above Kevin did not realize who was in front of him, Kevin felt he was on the bus. He did not realize that he as Dennis had kidnapped three women, and torturing them, even almost killing the three girls was not feasible until finally Mr. Beast killed the two girls he kidnapped. Besides Dr. Fletcher as a doctor of therapy Kevin disease has also been killed by Mr. Beast who has an evil character. Kevin regrets all his actions and asks Casey to kill him using his rifle.

### The Dominant Personality

In the second form in the form of one dominant personality in the offender. Dominant or core personality are often appearing has been known that the personality is the dominant personality. Whereas a personality that rarely appears is an excluded personality possessed by an actor and rarely appears to show itself. Dennis is always appearing in the film and he loved with the girls who can dance. There were fifteen Dennis scenes in this film but the writer only takes five scenes from Dennis.



Picture 8 <sup>12</sup>

**Casey** : Pee on yourself

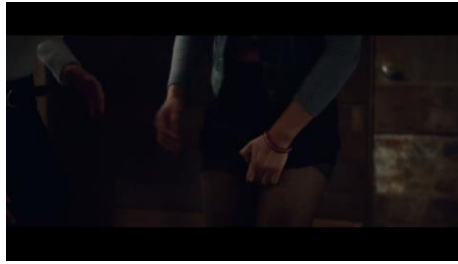
**Marcia** : No No<sup>13</sup>

<sup>10</sup> Duration: 01:34:22, 472 --> 01:34:24, 619

<sup>11</sup> Duration: 01:34:22, 472 --> 01:34:24, 619

<sup>12</sup> Duration: 00:08:05, 232 --> 00:08:06, 826

<sup>13</sup> Duration: 00:08:05, 232 --> 00:08:06, 826



Picture 9 <sup>14</sup>

**Marcia** : He wanted me to dance for him<sup>15</sup>

From the quotation above Dennis asked one of the women to dance in front of him. However, the woman refused, then Dennis carried and forced to bring the woman to the next room. The woman tried to thwart Dennis' plan by peeing in her pants, and after a while Dennis returned the woman to the initial place.

### The dissociative Identity

The dissociative identity is two personalities not aware of each other. In this form all personalities only have a little memory about what other personalities are, not even recognizing at all that he has a different personality. This form certainly sees that there is no connection between the personality of one and the other personalities, so that any change in each personality is still not realized by the actor. He did not aware if he was changed into different personality.



Picture 19 <sup>16</sup>

**Hedwig** : He's on the move.<sup>17</sup>

From the quotation above it showed when Dennis change into Hedwig. Where Dennis was adult and he always take care of the people. Hedwig was the children and he was active. He always disturbs the people around him and always smile alone. He did not know what Dennis had done, so he saw three women in the room and he was happy because there were friends playing.

### The Dissociative Identity Which There is Connection Between the Personality

<sup>14</sup> Duration: 00:08:47, 677 --> 00:08:50, 054

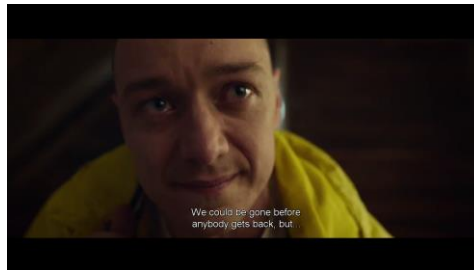
<sup>15</sup> Duration: 00:08:47, 677 --> 00:08:50, 054

<sup>16</sup> Duration: 00:24:45, 708 --> 00:24:49, 048

<sup>17</sup> Duration: 00:24:45, 708 --> 00:24:49, 048



In the last form in the form of the two personalities competing to get the actors' self-control, that this form is characterized by every personality that is quite complex, has its own pattern of behavior, memory and relationships. Each personality determines the actions of the actors when they are in control.



Picture 20 <sup>18</sup>

**Hedwig** : We could be gone before anybody gets back, but<sup>19</sup>

From the quotation above Hedwig innocent child was asked to help free the three women, but Hedwig felt confused and depressed about his fear of Dennis and Barry so that soon the personality of Dennis and Barry scrambled to take over the situation, and in the end the powerful Dennis controlled Kevin's body.

Based on the explanations above it can be concluded that the there are four kinds of DID portrayed by Kevin in *Split's* Film by Night Shyamalan, they are the main personality, the dominant personality, the dissociative identity and the dissociative identity which there is connection between the personality.

### **The Cause of DID Portrayed by Kevin in *Split's* Film by Night Shyamalan.**

The writer found that there are two cause of DID Portrayed by Kevin in *Split's* Film by Night Shyamalan. It can be seen below:

#### **The Perpetrator Has Experienced Severe Distress**

The second cause of dissociative identity disorder is experiencing severe distress. This distress is caused by severe physical or sexual torture in childhood. When he was child he got bad accident it caused him have personality problem.

When the was child he loves with his father very much. His father always asks him to go in the forest. It can be seen below:



Picture 29 <sup>20</sup>

**Kevin's mother** : Kevin Wendell crumb!

<sup>18</sup> Duration: 00:27:16, 531 --> 00:27:19, 354

<sup>19</sup> Duration: 00:27:16, 531 --> 00:27:19, 354

<sup>20</sup> Duration: 01:33:49, 003 --> 01:33:50, 908



You made a mess! Get out here!<sup>21</sup>



Picture 30<sup>22</sup>

From the quotation Kevin always gets violence, punches and torture from his own mother. Kevin received torture at any time, Kevin who at that time was still young, could not resist his mother, he was only willing to accept torture. The torture made the wound in Kevin's hand even Kevin's body. The torture also caused deep trauma to Kevin.

### **The Encouragement of Willingness to Stand Alone in the Offender**

The last cause of dissociative disorders is the urge to stand alone in the wild. States that this is characterized by the function of volition which is the desire of a different personality, then he conflicts with the functions of the part of the will that was earlier. So that the wills of each of these will stand alone. Then there was a personal split, multiple personal or multiple personalities.



Picture 31<sup>23</sup>



Picture 32<sup>24</sup>

<sup>21</sup> Duration: 01:33:49, 003 --> 01:33:50, 908

<sup>22</sup> Duration: 01:33:50, 988 --> 01:33:54, 122

<sup>23</sup> Duration: 01:09:29, 782 --> 01:09:31, 561



**Kevin's uncle** : this isn't funny, I am your uncle<sup>25</sup>

From the quotation above the nature of Kevin who is quite, obedient, becomes a rebel because of the action of his uncle who had sexually harassed him and a sense of wanting to stand alone arises, and Kevin also does not want the incident to be known by his father so Kevin intends to kill his uncle using a rifle.

Based on the explanations above it can be concluded that there are two causes of DID portrayed by Kevin in *Split's* Film by Night Shyamalan they are the perpetrator has experienced severe distress where he remembered about the past and he was still afraid and the encouragement of willingness to stand alone in the offender where it caused his past and he could not forget it that was why he want to be independent.

### **Kevin solve DID in *Split's* Film by Night Shyamalan**

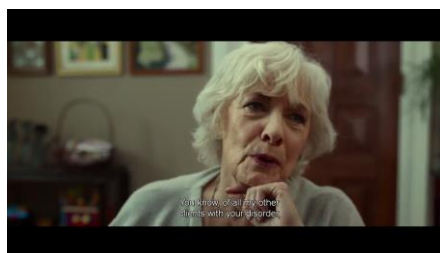
The writer found that there are two Kevin's solve DID Portrayed by Kevin in *Split's* Film by Night Shyamalan. It can be seen below:

#### **Getting Speech and Psychotherapy**

Getting Speech and Psychotherapy is the way to know get understanding with other people, because the person who had problem in DID they could not get what they want as other people did, psychotherapy lasts for five to seven years. Isa Mars also supported that the main purpose is to "unite" some intact personalities. Psychotherapy also helps sufferers deal with trauma that triggers the emergence of other personalities.<sup>26</sup> They need someone can understand them and listen to their problems and find the way to solve the problems.



Picture 31<sup>27</sup>



Picture 32<sup>28</sup>

<sup>24</sup> Duration: 01:09:40, 360 --> 01:09:42, 072

<sup>25</sup> Duration: 01:09:40, 360 --> 01:09:42, 072

<sup>26</sup> Isa Mars, "5 Keys to Overcoming Speech and Language Disorder", <https://www.speechlanguagefeeding.com/5-keys-overcoming-language-disorder/>, accessed on 01 November 2019

<sup>27</sup> Duration: 00:14:23, 799 --> 00:14:26, 371

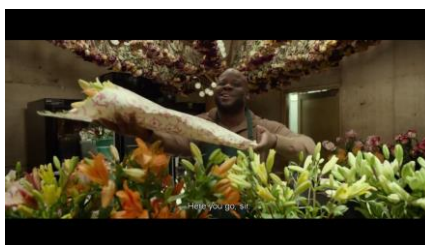


**Dr. Fletcher** : You know, of all my other  
clients with your disorder<sup>29</sup>

From the quotation above Dr. Fletcher and Kevin, but when going to Dr. Fletcher Barry's personality takes over Kevin's body. Dr. Fletcher knows that it is Barry and not Kevin. She also advised Barry that Kevin must be himself and not be someone else for the good of his life.

### Getting Much Speech

Getting Much Speech is the way to solve people who had problem in DID, they could not speak well so they need to make much speech to practice their speaking. It could with friends and also with family. To make the most progress in the least amount of time needs to get as much speech/language therapy as they can tolerate and no less than twice a week.



Picture 38<sup>30</sup>

**Florist** : here you go sir<sup>31</sup>



Picture 39<sup>32</sup>

From the quotation above Kevin always buys flowers on weekends, Kevin also always talks to anyone and anywhere because he does not want to experience a split in him. This was also explained by Dr. Fletcher said that he had to talk to anyone a lot and not too often alone.

Based on the explanations above it can be concluded that there are two ways when Kevin wanted to solve DID in *Split's* Film by Night Shyamalan, they are getting speech and psychotherapy, where met the doctor if he always feels his past and the doctor asked him to forget his past and getting much speech, where he tried to tell about his thinking but in DID's

<sup>28</sup> Duration: 00:15:35, 287 --> 00:15:39, 833

<sup>29</sup> Duration: 00:15:35, 287 --> 00:15:39, 833

<sup>30</sup> Duration: 01:20:36, 511 --> 01:20:38, 127

<sup>31</sup> Duration: 01:20:36, 511 --> 01:20:38, 127

<sup>32</sup> Duration: 01:20:36, 511 --> 01:20:38, 127



case experienced by Kevin it was not resolved because some of Kevin's personalities like Dennis were very strong and Kevin himself was too weak and homogeneous.

#### IV. Conclusions

Based on the finding and analysis in the chapter four, the writer draws the following conclusion.

There are four kinds of DID portrayed by Kevin in *Split's* Film by Night Shyamalan, they are the main personality, the dominant personality, the dissociative identity and the dissociative identity which there is connection between the personality.

There are two causes of DID portrayed by Kevin in *Split's* Film by Night Shyamalan they are the perpetrator has experienced severe distress where he remembered about the past and he was still afraid and the encouragement of willingness to stand alone in the offender where it caused his past and he could not forget it that was why he want to be independent.

There are two ways when Kevin wanted to solve DID in *Split's* Film by Night Shyamalan, they are getting speech and language therapy, where met the doctor if he always feels his past and the doctor asked him to forget his past and getting much speech, where he tried to tell about his thinking.

#### References

- Creswell, John W. 1997. *Qualitative Inquiry and Research Design*, United States of America: California.
- Fromkin, Victoria. 2011. et al. *An Introduction to Language*. Los Angeles: University of California.
- Nazir, Moh. 2011. *Motode Penelitian*, Bogor: Penerbit Ghalia Indonesia.
- Nevid, J. S. Rathus, S.A. et al. 2005. *Psikologi Abnormal*, Fifth Edition. Penerjemah (Tim Fakultas Psikologi UI: Murad, J.dkk). Jakarta: Penerbit Erlangga.
- Ratna, Nyoman Kutha. 2011. *Teori, Metode dan Teknik Penelitian Sastra*. Cet. Ke-III edisi revisi, Yogyakarta: Pustaka Pelajar.
- Sharan, B. Merriam. 2011. *Rualitative Research and Case Study Applications in Education*, New York City 1998.
- Sugiyono. 2009. *Metode Penelitian Kuantitatif Kualitatif dan R & D*, Bandung: Alfabeta.
- Tim Penyusun. 2018. *Pedoman Penulisan Skripsi*, Jambi: Fakultas Adab-Sastra da Kebudayaan Islam.
- Ashraf, Aisha. Krishnan, Radhika. Wudneh, Eden. Acharya, Ajita. and Tohid, Hassaan. 2016. *Journal of Cell Science & Therapy, Dissociative Identity Disorder: A Pathophysiological Phenomenon*.
- Carol, W. 2007. "abnormal psychology", volume 2, edition 11.
- Fizrokul. 2015. *The Expressive Language Disorder of the Cerebral Palsy in the Skallagrigg Movie*, Skripsi: English Letters and Language Department, Faculty of Humanities, the State Islamic University of Maulana Malik Ibrahim Malang.
- George, Yule. 1988. *The Study of Language*, New York: Cambridge University Press.
- Gillig, M. Paulette. 2009. *Psychotherapy Rounds, Dissociative Identity Disorder a Conversial Diagnosis*.
- Hartuti, Sri. 2013. *A Psycholinguistic Study On Communication Impairment Found in The Character "Whitney" In Maverick Novel*, Skripsi: Universitas Negeri Malang.
- Heelen, Van Agt. 2011. *Language Disorder in Children*, Belanda: University Rotterdam.
- Hellen, M. Farrel. 2011. *Dissociative Identity Disorder*, Journal of the America Academy of Psychiatry and the Law.
- Lathifah, Faiqotul. 2008. *The Multiple Personality in Daniel Keyes' The Minds of Billy Milligan*, Thesis, English and Language Department Faculty of Humanities and Culture The State Islamic University of Malang.



- Nafiah. 2008. *Expressive Language Disorder of the Autistic child in Mercury Rising Movie*, Skripsi: Universitas Negeri Malang.
- Nastiti, Dian Ndari. 2010. *A Study of Sybil's Dissociative Identity Disorder in Flora Rheta Schreiber's Sybil, The True Story of Woman Possessed by Sixteen Personalities*, Thesis, English Language Education Study Program Departmen of Language and Arts Education Faculty of Teachers Training and Education Sanata Dharma University Yogyakarta.
- Naushin, Nazifa Islam. 2011. *A Study of the Pragmatic Language Impairments of Children with Attention Deficit Hyperactivity Disorder (ADHD)*, BRAC University, Dhaka, Bangladesh.
- Powell, Anna. 2007. *Deleuze, Altered States and Film*, Edinburgh University Press Ltd.
- Sumitro, A. N. 2011. *A Psycholinguistic Study On Comprehension Disorder Of The Schizophrenic Main Character In A Beautiful Mind Movie*, Skripsi: Universitas Brawijaya.
- Susanti, Evi. 2006. *Language Disorder And Its Treatments On Autistic Children Portrayed In Lindsey Hill's After Thomas Movie*, Skripsi: UIN Sunan Ampel Surabaya.
- Villarejo, A. (2007). *Film Studies the Basic*, New York: Library of Congres, Third Edition.

<https://www.imdb.com/title/tt4972582/awards>